

MONTHLY MEMBERSHIP PROGRESS REPORT

District 24 C

Results as of: 12/31/2023

GMT:

LOCATION VIRGINIA

GMT CA

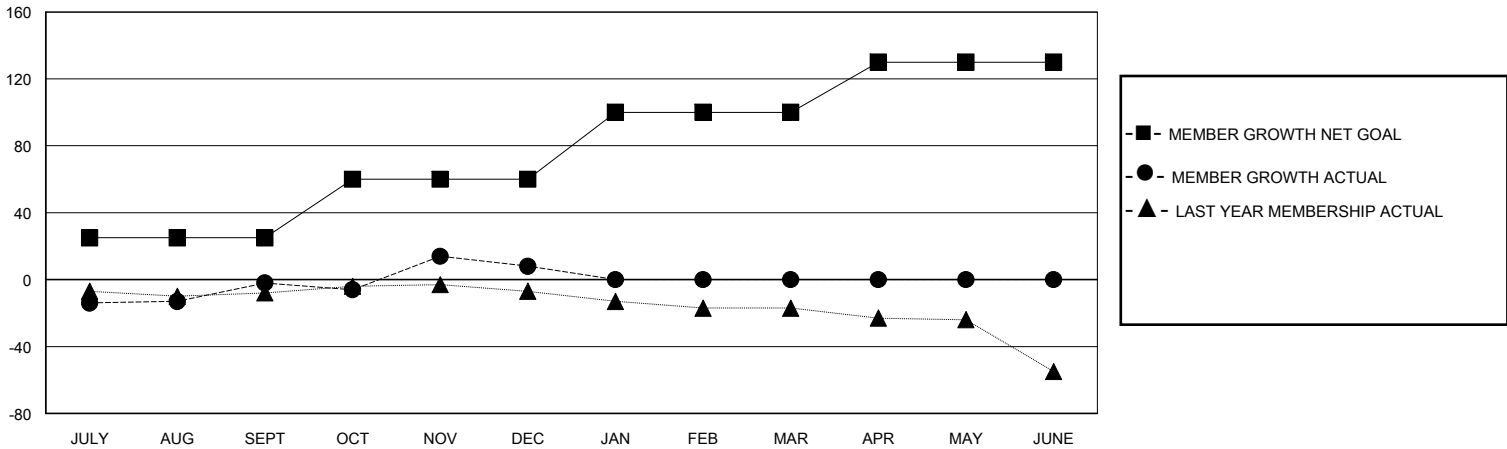
Clubs			
RESULTS FOR 2023-2024			
QUARTER	NEW CLUB GOAL	NEW CLUBS	DROPPED CLUBS
JULY/AUG/SEPT	0	0	0
OCT/NOV/DEC	1	0	0
JAN/FEB/MAR	0	0	0
APR/MAY/JUNE	0	0	0

Members			
RESULTS FOR 2023-2024			
QUARTER	MEMBER GROWTH NET GOAL	MEMBER GROWTH ACTUAL	DROPPED MEMBERS ACTUAL (including transfers)
JULY/AUG/SEPT	25	36	34
OCT/NOV/DEC	35	52	39
JAN/FEB/MAR	40	0	0
APR/MAY/JUNE	30	0	0

GOALS AND ACTUAL NEW CLUBS CUMULATIVE



GOALS AND ACTUAL MEMBERS CUMULATIVE



DROPPED CLUBS: 0

26 CLUBS OF 51 ADDED 1 OR MORE NEW MEMBERS

GENDER DISTRIBUTION

MALE 800 (63.90%)
FEMALE 452 (36.10%)

DROPPED MEMBERS

DECEASED	16
CLUB CANCELLED	0
OTHER	57
TOTAL	73

[CLICK HERE FOR CUMULATIVE MEMBERSHIP DATA](#)

TOTAL FAMILY UNIT MEMBERS	222
FAMILY MEMBERS PAYING HALF DUES	112